

PROFILE

SCALE: Vert 1" = 3'
Hor. 1" = 30'

Note: As to depth of cover over catch pipe will be Gas - about 30"
Note - about 45" depth of sewer - as shown.

LEGEND

- GAS
- WATER
- ES- RS- SEWER (EXIST & PROPOSED)

WATERMAN AVE TO TWIN CREEK CHANNEL
SAN BERNARDINO COUNTY PUBLIC WORKS
STATE OF CALIFORNIA

GILBERT ST DRAIN
PLAN - PROFILE

DRAWN BY: J.D. WATKINS
CHECKED BY: J.D. WATKINS
APPROVED BY: M.A. Nichols
CITY OF SAN BERNARDINO
ZONE No. 2 JOB No. 866

PLAN
SCALE 1" = 60'

NOTE:
CITY OF SAN BERNARDINO WILL MAKE NECESSARY CHARGES TO UTILITIES OWNED OR CONTROLLED BY THE CITY.

ATTENTION - ENGINEER IS THE
THIS STREET MAY NOT BE BLOCKED TO TRAFFIC WITHOUT PRIOR APPROVAL OF CITY OF SAN BERNARDINO AND WITHOUT PROPER NOTIFICATION TO EMERGENCY AGENCIES INCLUDING HOSPITAL, FIRE, POLICE, AMBULANCE ETC.

NOTE - B.M. Elev. 1120.63 S.B. Co. F.B. 247/34
U.S.G.S. Datum L+T. in S. End S.E.
Wing Wall Twin Cr. Bridge 3 1/2 West St.
F.C.D. Elev. 1120.54 X on F.M. Plate
So. Side Gilbert St. Approx. 450' E. End
of Waterman Ave.
City B.M. Elev. 1120.64
F.C.D. F.B. 277 U.S.G.S. Datum

Note
Catch Basins numbered
1 thru 14 See Dwg's 2 & 3
for Details

See Dwg #3 for
Details

See Dwg #3
for Details

See Dwg #2
for Details

See Dwg #2
for Details

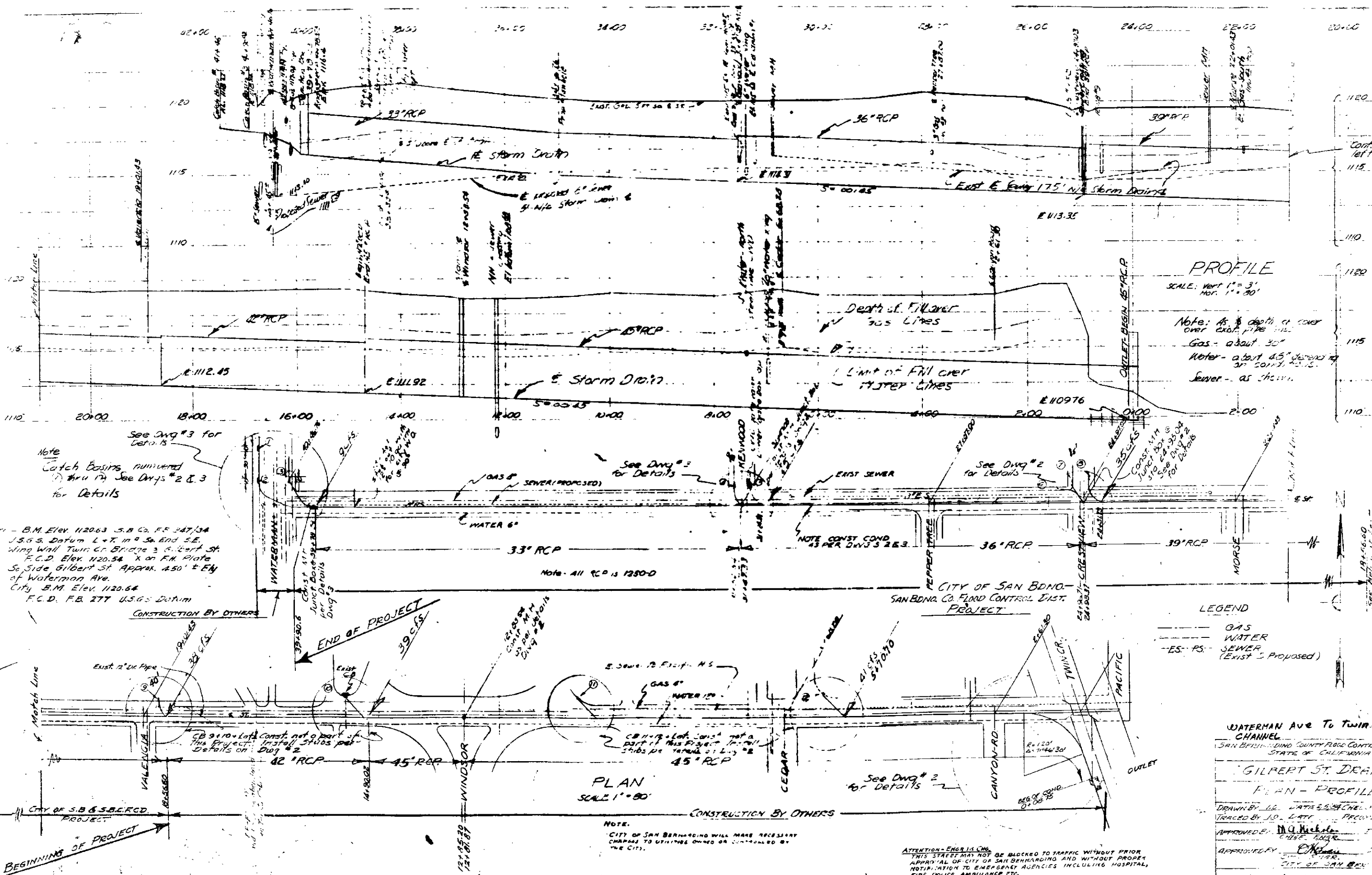
NOTE CONST COND
43 PER DWG'S 2 & 3

Note - All RCP is 1280-D

CONSTRUCTION BY OTHERS

CONSTRUCTION BY OTHERS

CITY OF SAN BERNARDINO
SAN BERNARDINO CO. FLOOD CONTROL DIST.
PROJECT



PROFILE

SCALE: Vert 1" = 3'
Hor. 1" = 30'

Note: As to depth of cover over catch pipe will be Gas - about 30"
Note - about 45" depth of sewer - as shown.

LEGEND

- GAS
- WATER
- ES- PS- SEWER (EXIST & PROPOSED)

WATERMAN AVE TO TWIN CREEK CHANNEL
SAN BERNARDINO COUNTY PUBLIC WORKS
STATE OF CALIFORNIA

GILBERT ST DRAIN
PLAN - PROFILE

DRAWN BY: J.D. WATSON
CHECKED BY: J.D. WATSON
APPROVED BY: M.A. Nichols
CITY OF SAN BERNARDINO
ZONE No. 2 JOB No. 866

PLAN
SCALE 1" = 30'

NOTE:
CITY OF SAN BERNARDINO WILL MAKE NECESSARY CHARGES TO UTILITIES OWNED OR CONTROLLED BY THE CITY.

ATTENTION - ENGINEER IS ADVISED THAT THIS STREET MAY NOT BE BLOCKED TO TRAFFIC WITHOUT PRIOR APPROVAL OF CITY OF SAN BERNARDINO AND WITHOUT PROPER NOTIFICATION TO EMERGENCY AGENCIES INCLUDING HOSPITAL, FIRE, POLICE, AMBULANCE ETC.

NOTE - B.M. Elev. 1120.63 S.B. Co. F.B. 247/34
U.S.G.S. Datum L+T. in S. End S.E.
Wing Wall Twin Cr. Bridge 3 1/2 West St.
F.C.D. Elev. 1120.54 X on F.M. Plate
S. Side Gilbert St. Approx. 450' E. End
of Waterman Ave.
City B.M. Elev. 1120.64
F.C.D. F.B. 277 U.S.G.S. Datum

Note
Catch Basins numbered
1 thru 14 See Dwg's 2 & 3
for Details

See Dwg #3 for
Details

See Dwg #3
for Details

See Dwg #2
for Details

See Dwg #2
for Details

NOTE CONST COND
43 PER DWG'S 2 & 3

Note - All RCP is 1280-D

BEGINNING OF PROJECT

END OF PROJECT

CONSTRUCTION BY OTHERS